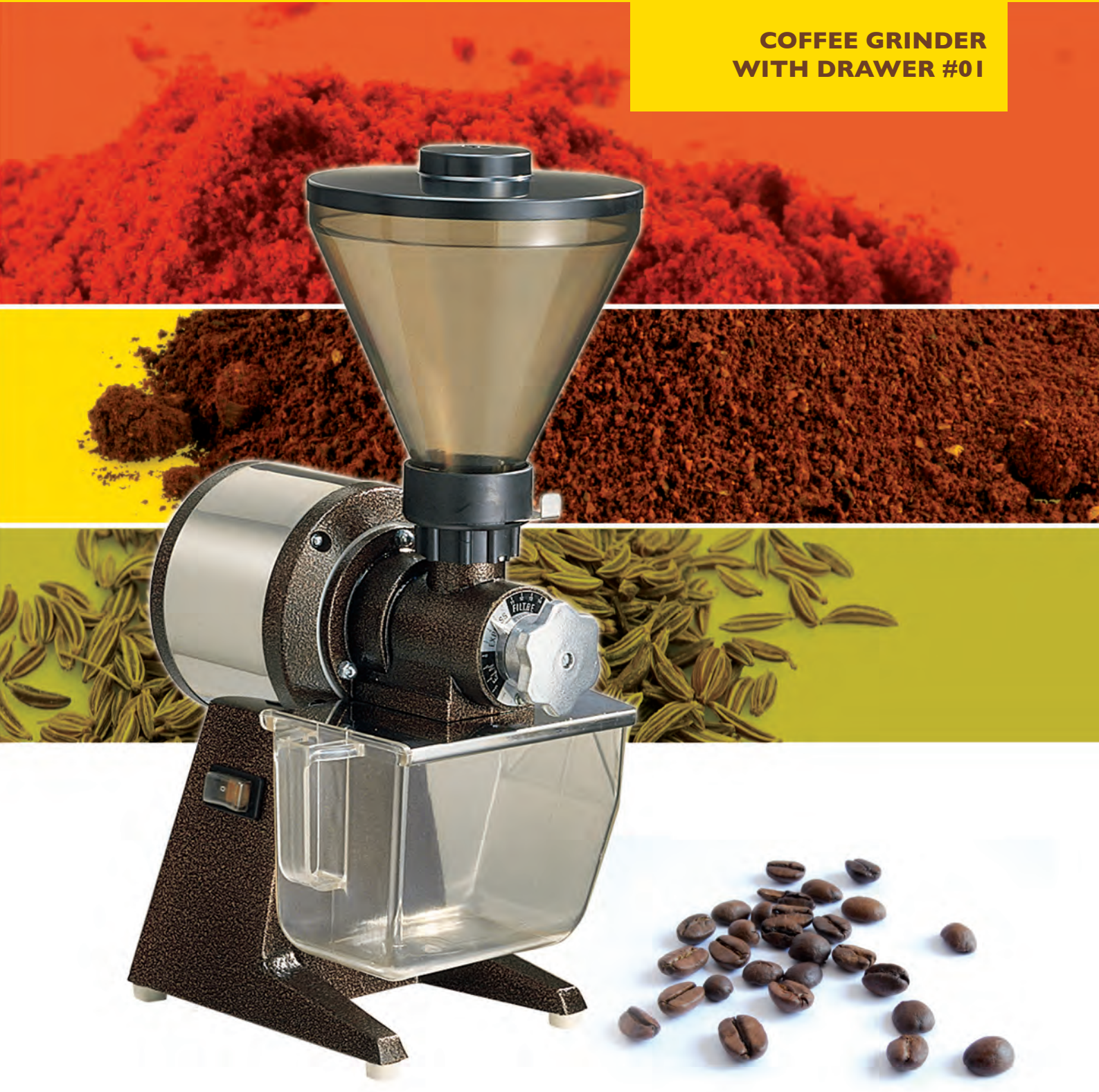




www.santos.fr

## COFFEE GRINDER WITH DRAWER #01



Internationally patented models



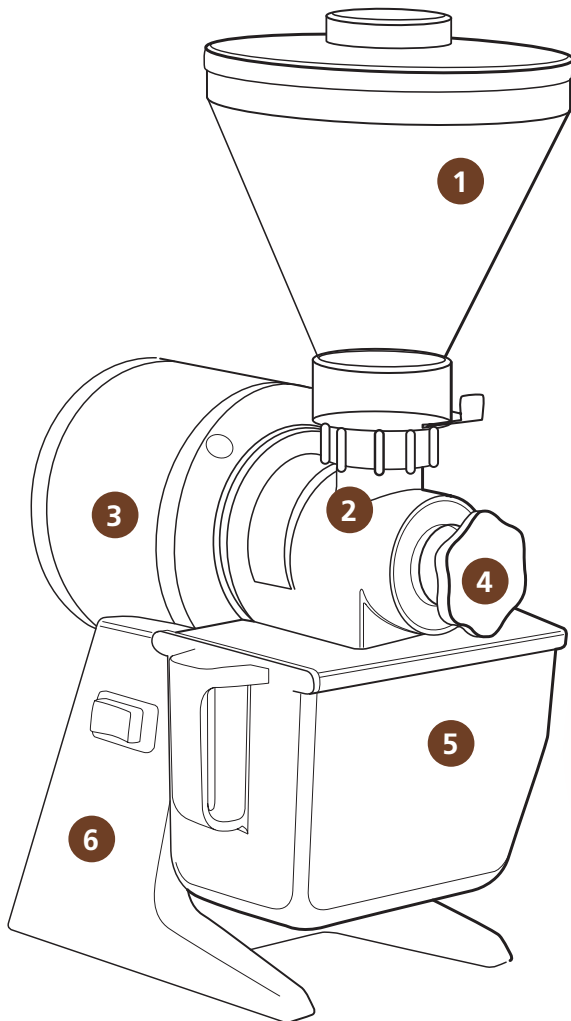


## THE GENUINE COFFEE GRINDER SINCE 1954

### Traditional sturdy and powerful shop coffee grinder for coffee and dry spices.

Easy to use and efficient, the coffee grinder #01 will give you a high quality grinding.

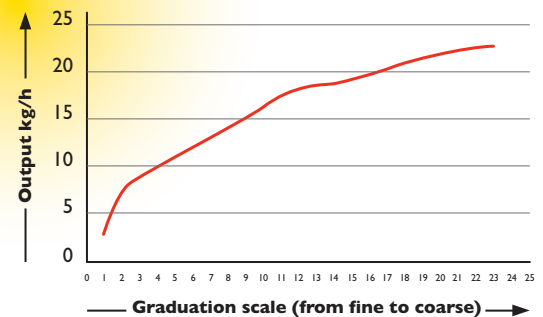
Ideal for shops, supermarkets, coffee roasters, bakeries...



1. 1 kg (2.2lbs) hopper
2. Ø 63.5 mm (2,5") grinding discs:  
**high resistance, long lasting**  
Designed and manufactured by Santos for a high quality grinding
3. **Powerful reliable commercial motor**  
**5-year warranty**
4. **Precision grinding**, from very fine to coarse  
Easy to adjust
5. **New special alimentary plastic drawer**  
without bisphenol A Capacity 800 g (1.8lbs)
6. Stainless steel and aluminium body



### Output of the coffee grinder #01



## + COFFEE GRINDERS: SANTOS KNOW-HOW

### Santos, 60 years experience

- Since 1954, we manufacture our own grinding discs for better results
- Santos is the leader in "Silent" coffee grinders for 15 years
- Constant and fine grinding, constant portion dispensed
- No "burn coffee" effect while grinding, no electrostatic coffee phenomenon
- Easy to adjust (grinding and dosing) and to maintain (changing the grinding discs is very easy)

## COFFEE GRINDER WITH DRAWER #01



## GRIND MORE THAN COFFEE...

www.santos.fr



Choose the appropriate version of the grinder #01 and grind all sorts of coffee and dry spices such as pepper, cinnamon, coriander or even poppy.

- Coffee grinder with drawer: reference 01
- Coffee grinder with bag holder: reference 01PS
- Pepper grinder with drawer: reference 01P
- Poppy grinder with drawer: reference 01PV



### TECHNICAL SPECIFICATIONS



#### Motor

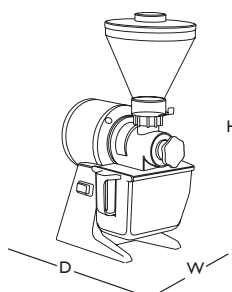
Single phase: 100-120V – 50/60 Hz – 650 W – CE  
220-240V – 50/60 Hz – 600 W – CE

Speed: | 500 rpm (50 Hz)  
| 800 rpm (60 Hz)



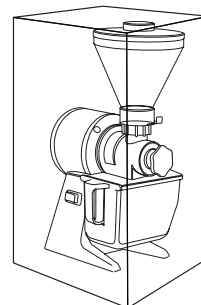
#### Weight

Net: 14Kg (31 lbs)  
Shipping: 15 Kg (33 lbs)



#### APPLIANCE

D: 320mm (13")  
W: 250mm (10")  
H: 550mm (22")



#### SHIPPING BOX

D: 410mm (16")  
W: 300mm (12")  
H: 575mm (23")

### SAFETY, STANDARDS, HYGIENE

#### In accordance with the following regulations

Machinery directive 2006/42/EC  
Electromagnetic compatibility 2004/108/EC  
"Low voltage" Directive 2006/95/EC  
Regulation 1935/2004/EC (contact with food)  
RoHS directive 2002/95/EC

#### Harmonized European Standards

EN ISO 12100 - 1 and 2:2004  
EN 60204-1:2006  
EN 60335-2-64 : 2004 Commercial electric kitchen machines  
CE (European standards)

#### Thermal Safety

Motor protected by internal thermal detector

#### Acoustic Safety

Very silent and powerful asynchronous motor

#### Hygiene

All removable parts can be put in a dishwasher or easily cleaned with hot soapy water.

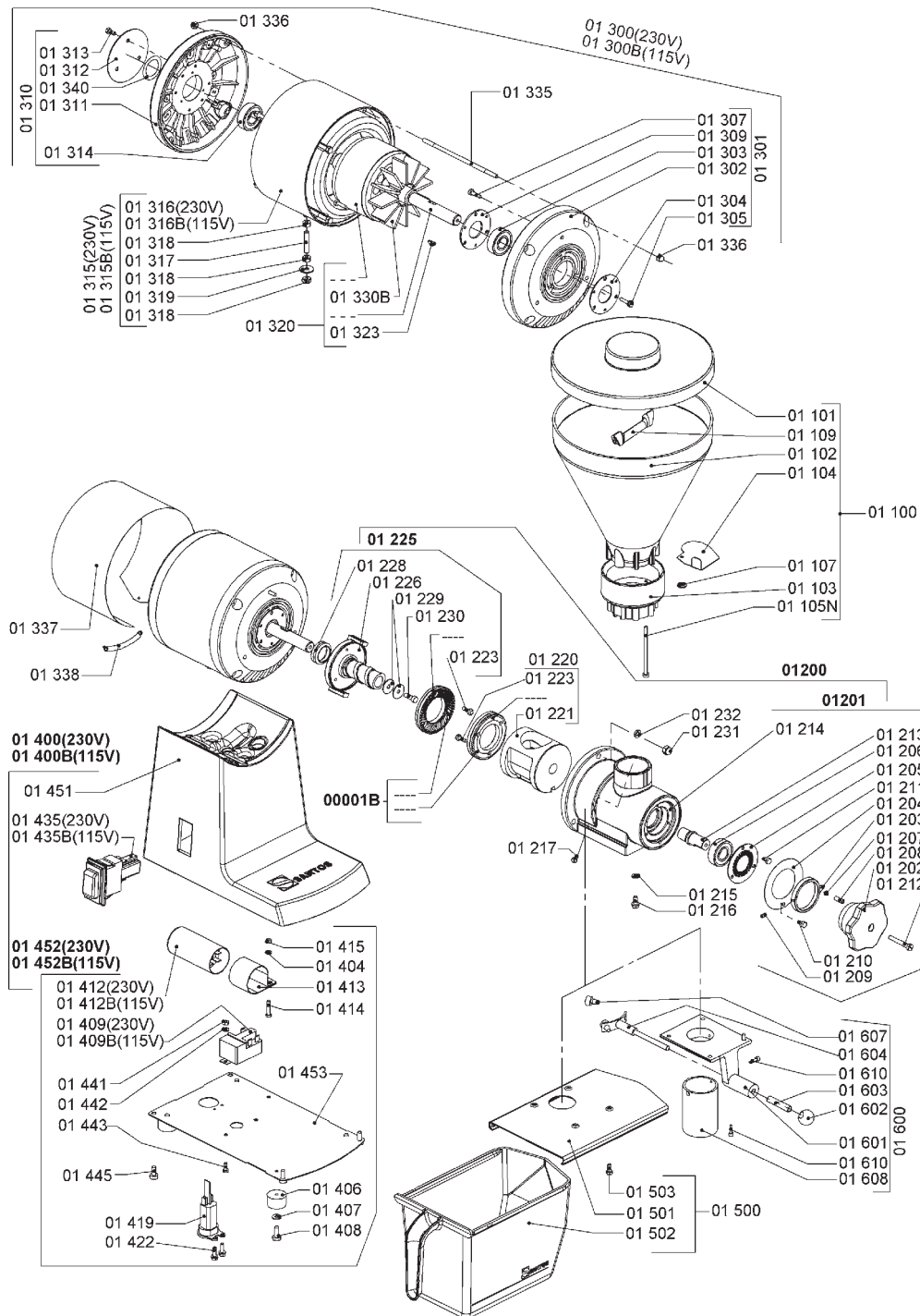
**PRODUCT: 2-YEAR WARRANTY – MOTOR: 5-YEAR WARRANTY**





# COFFEE GRINDER WITH DRAWER #01

www.santos.fr



**SANTOS**

140-150, avenue Roger Salengro BP 80 067 - 69511 Vaulx-en-Velin Cedex (Lyon) FRANCE – Tel. +33 4 72 37 35 29 – Fax. +33 4 78 26 58 21

Website : [www.santos.fr](http://www.santos.fr) – Email : [santos@santos.fr](mailto:santos@santos.fr)