

JUDO PERFORMANCE LINE

**When performance matters:
turn to standards Made in Germany!**



WATER TREATMENT

Quality made in Germany



Product concept, engineering, testing, production and quality control, all in our facilities in the south west of Germany. JUDO products comply with the stringent German standard's requirements supported by a range of international approvals from North America to Australia.

Leading technology. There for you every day.

Water is our most important food.
Clean and hygienic drinking water from every tap is the basic requirement for the retention of health and sense of wellbeing.

However, water means more than that:
It is the heat transfer medium in our heaters, it flows through house installations and air conditioners.
It cools machines, it keeps production processes going and it cleans and disinfects.

The requirements for water quality are varied and depend on applications.

JUDO is a solutions provider.
Water treatment products and systems, engineered for optimal results. Conform with the latest relevant standards and guidelines. Geared to our client's specific requirements and, most importantly of all, governed by our own stringent quality standards.

Our daily bread for more than 80 years!



JULIUS DOPSLAFF Campus – showroom



JULIUS DOPSLAFF Campus – training room

Our location. At work and at home.

At home in Winnenden, just outside of Stuttgart, JUDO is name in water treatment recognised around the world. Administration, project management and the newly opened JULIUS DOPSLAFF Campus for our training programme, water treatment education courses and our customer service department are all located here. We value keeping journeys short, this is also true for our R&D, engineering, design and production which is our only production facility conveniently close in Backnang-Waldrems.

JULIUS DOPSLAFF Campus, our newly opened centre for training and service, is just a stone's throw away.

We value short paths even for development, design and production.

Therefore, we manufacture only in our central production site in the nearby Backnang-Waldrems. Production processes, quality control, systems development all close at hand.

When it comes to distribution, however, there we have a different perspective in view. JUDO has 8 regional branches in Germany and distribution centres and partners in over 50 countries including JUDO branches in Austria, Switzerland, France, Belgium, Netherlands, Luxembourg, Poland, China, Canada and Australia.



JUDO Winnenden: Administration



JUDO Winnenden: JULIUS DOPSLAFF Campus



JUDO Backnang: Development and production



JUDO Hilden: West branch



JUDO BeNeLux, Brussels



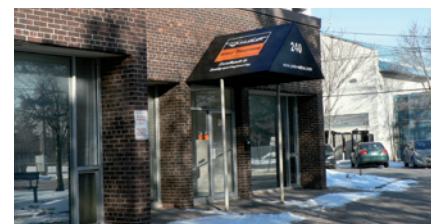
JUDO France, Straßburg



JUDO Austria, Stockerau



JUDO Switzerland, Liestal



JUDO North America

Small particles, great danger – for all who think ahead.

Homes are built for living. This protective filter is also designed for the same purpose. Drinking water protective filters from JUDO LONGLIFE-LINE offer reliable protection at perfect price-benefit ratio. Unique thanks to patented ceramic technology - as proven millions of times by single-lever mixers.

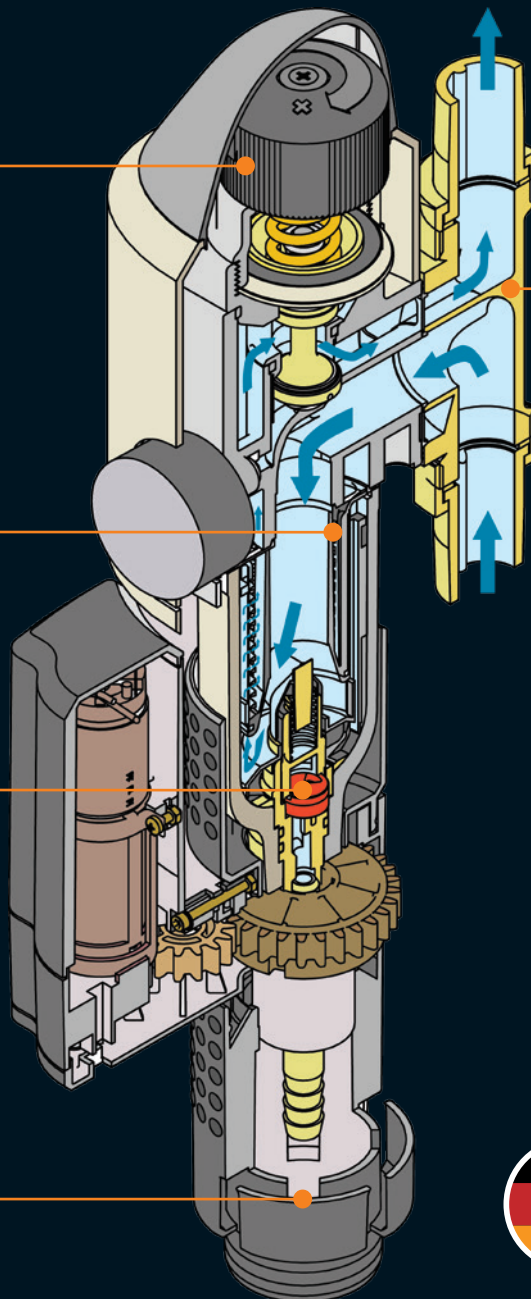
LONGLIFE-LINE

Integrated pressure regulator,
Handwheel for adjustment,
Pressure can be adjusted from 1.5 to 6 bar

Silver-plated backwash unit which
provides optimal cleaning of the sieve
during backwash ($\frac{3}{4}$ " - $1\frac{1}{4}$ ").

The filters of LONGLIFE class are the
first filters equipped with high-tech
ceramic flushing valve.

Free integrated discharge in accordance
with EN 1717 (direct connection option to
the waste water pipe Ø 50 mm)



QUICKSET-E built-in rotary flange



Quality made
in Germany

Practical and economical.

Filter cleaning through backwashing - quick manual or automatic mode.

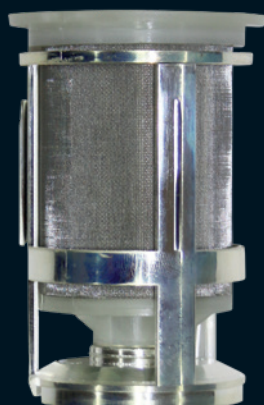
No expensive and time-consuming replacement of filter cartridge.

No need to break the water supply for backwashing.



Ceramic technology ensures a long working life and the short backwashing time for low water consumption. Movable UV protection.

Automatic versions with time-controlled backwashing. Automatic sieve cleaning is done quickly and reliably by a motor. The patented emergency power supply closes the flush valve in case of power failure during the flushing process.



Perfect filter cleaning

Many filters are cleaned simply by flushing. JUDO filters by backwashing. Clean water is drawn back through the sieve lifting dirt off and flushing it out of the unit, no interruption to the water supply and no expensive cartridge replacement. A JUDO patent!

Scope of delivery and technical data



JUDO SPEEDY-LONGLIFE backwash protective filter

Scope of delivery: Filter cover made of high-quality plastic PN 16, screws made of brass, threaded connector in accordance with EN 10226-1, filter screen made of stainless steel, patented silver-plated cleaning unit, large handwheel for backwashing with simultaneous cleaning of the inspection glass (with movable UV protection). With integrated free discharge and patented ceramic flush valve with hose connection as well as cover with integrated backwash date display.

Type	JSY-LF	JSY-LF	JSY-LF	JSY-LF	JSY-LF
Pipe connection	¾"	1"	1¼"	1½"	2"
Nominal flow rate, m³/hr *	6.1	7.1	7.3	12.2	15.1
Mesh size mm	0.1	0.1	0.1	0.1	0.1
Max. water temperature °C	30	30	30	30	30
Installation length, mm	180	195	230	252	280
Order number	8070568	8070569	8070570	8070558	8070559



Made in Germany



Filter screen made of stainless steel



Proven quality



Inspection glass



Ergonomic handwheel



Backwashing reminder



Very reliable



Horizontal and vertical installation



JUDO SPEEDYMAT-LONGLIFE Automatic backwash protective filter

Scope of delivery: Filter cover made of high-quality plastic PN 16, screws made of brass, threaded connector in accordance with EN 10226-1, filter screen made of stainless steel, patented silver-plated cleaning unit, backwashing with simultaneous cleaning of the inspection glass (with movable UV protection). With integrated free discharge and patented ceramic flush valve with hose connection as well as cover with integrated backwash date display. With time-controlled automatic backwashing: The sieve surface is cleaned three times during each backwashing process. Pre-selectable adjustment of the backwashing interval (1 day, 1 week, 1 month, 2 months). With buffer battery which ensures that backwashing which has already started is completed even if there is power failure, test unit for the buffer battery, cover with integrated backwashing date display, including plug-in power supply.

Type	JSY-LF-AT	JSY-LF-AT	JSY-LF-AT	JSY-LF-AT	JSY-LF-AT
Pipe connection	¾"	1"	1¼"	1½"	2"
Nominal flow rate, m³/hr *	6.1	7.1	7.3	12.2	15.1
Mesh size mm	0.1	0.1	0.1	0.1	0.1
Max. water temperature °C	30	30	30	30	30
Installation length, mm	180	195	230	252	280
Order number	8070571	8070572	8070573	8070566	8070567



Made in Germany



Filter screen made of stainless steel



Proven quality



LED display



Inspection glass



Very reliable



Horizontal and vertical installation



Product has potential-free contact

* for drinking water with clean filter at 0.5 bar pressure loss.



JUDO JUKO-LONGLIFE domestic water filtration station

Scope of delivery: Filter housing made of high-quality plastic PN 16, built-in rotary flange with patented bayonet lock made of brass with screw, threaded connector in accordance with EN 10226-1, filter screen made of stainless steel, silver-plated cleaning unit, large handwheel for backwashing with simultaneous cleaning of the inspection glass (with movable UV protection). With integrated free discharge and patented ceramic flush valve with hose connection, pressure manometer, pressure regulator with factory-made pressure adjustment of 4 bar, adjustment range of pressure from 1.5 - 6 bar, sound insulated group 1 without cover, cover with integrated backwashing date display.

Type	JUKO-LF	JUKO-LF	JUKO-LF	JUKO-LF	JUKO-LF
Pipe connection	¾"	1"	1¼"	1½" *	2" *
Nominal flow rate, m³/hr **	2.3	3.6	5.8	9.1	14.0
Mesh size mm	0.1	0.1	0.1	0.1	0.1
Max. water temperature °C	30	30	30	30	30
Installation length, mm	180	195	230	301	335
Order number	8170250	8170251	8170252	8170215	8170216



Made in Germany



Pressure regulator



Filter screen made of stainless steel



Proven quality



Inspection glass



Ergonomic handwheel



Backwashing reminder



Very reliable



Horizontal and vertical installation



JUDO JUKOMAT-LONGLIFE Automatic domestic water filtration station

Scope of delivery: Filter housing made of high-quality plastic PN 16, built-in rotary flange with patented bayonet lock made of brass with screw, threaded connector in accordance with EN 10226-1, filter screen made of stainless steel, silver-plated cleaning unit, backwashing with simultaneous cleaning of the inspection glass (with movable UV protection). With integrated free discharge and patented ceramic flush valve with hose connection, pressure manometer, pressure regulator with factory-made pressure adjustment of 4 bar, adjustment range of pressure from 1.5 - 6 bar, sound insulated group 1 without cover, cover with integrated backwashing date display. With time-controlled automatic backwashing. The sieve surface is cleaned three times during each backwashing process. Pre-adjustable setting of backwashing start (1 day, 1 week, 1 month, 2 months), with buffer battery, which ensures that backwashing which has already started is completed even if there is power failure, test unit for the buffer battery, including plug-in power supply.

Type	JUKO-LF-AT	JUKO-LF-AT	JUKO-LF-AT	JUKO-LF-AT	JUKO-LF-AT
Pipe connection	¾"	1"	1¼"	1½" *	2" *
Nominal flow rate, m³/hr **	2.3	3.6	5.8	9.1	14.0
Mesh size mm	0.1	0.1	0.1	0.1	0.1
Max. water temperature °C	30	30	30	30	30
Installation length, mm	180	195	230	301	335
Order number	8170238	8170239	8170240	8170241	8170242



Made in Germany



Pressure regulator



Filter screen made of stainless steel



Proven quality



Inspection glass



LED display



Very reliable



Horizontal and vertical installation



Product has potential-free contact

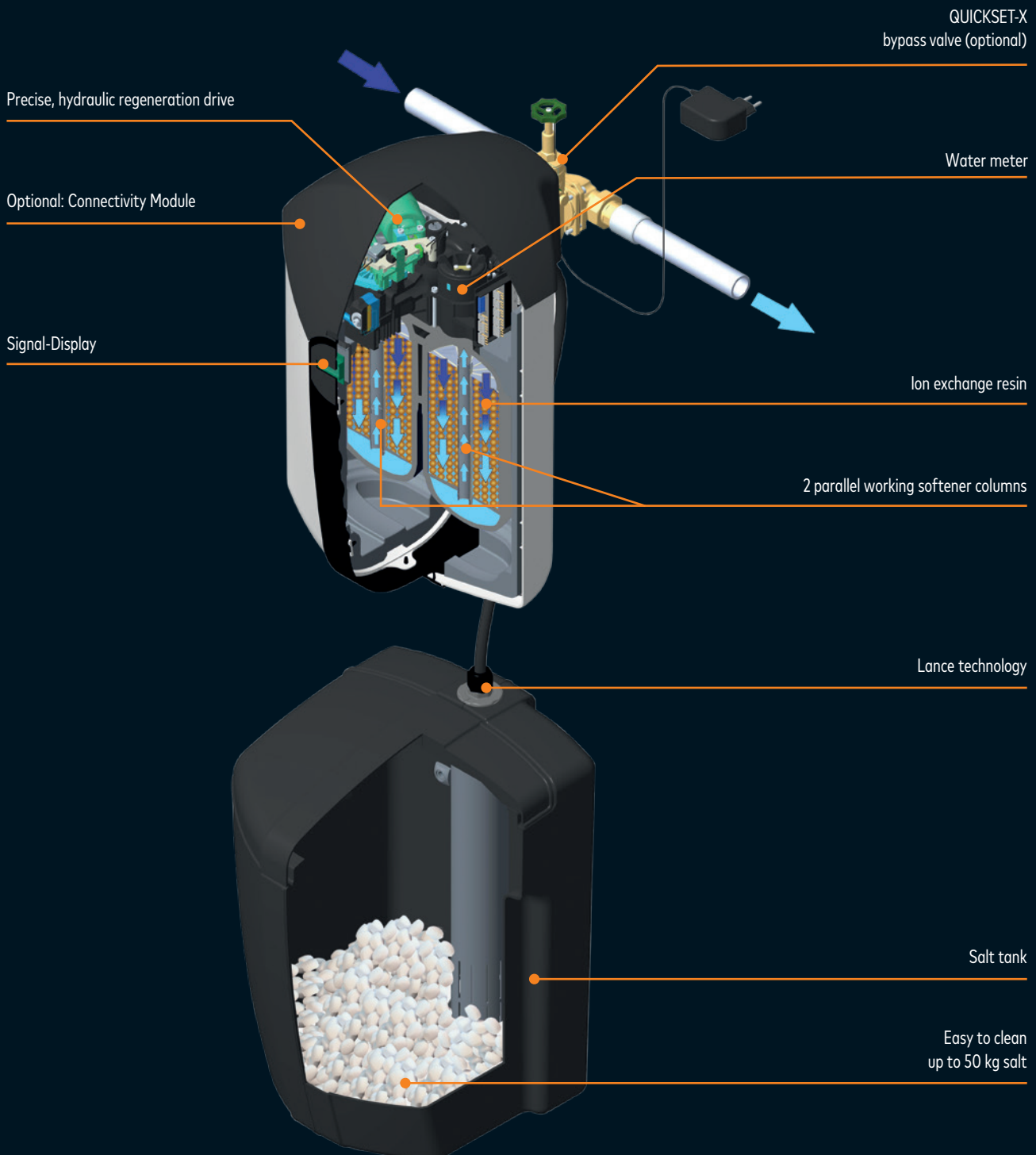
* JUKO-LF 1½-2": with backflow preventer

** Nominal flow of the clean filter in accordance with EN 1567 for drinking water.

Soft water when you want it.

The new JUDO QUICKSOFT range unites decades of water treatment experience and today's design and engineering with the technology of tomorrow. Truly the JUDO experience!

QUICKSOFT-P



JUDO QUICKSOFT softeners are double column, parallel operating units with optimised regeneration intervals ensuring soft water whenever you need it.



JUDO QUICKSOFT units can also be fitted with an optional connectivity module. Via a LAN connection and an App you can turn your QUICKSOFT into a communications centre. One glance at your smart-phone will then get you all the information you need.

All unit functions can be regulated using the membrane keypad. Changes in colour on the display window indicate current unit status.



QUICKSOFT-P and QUICKSOFT-P MEGA have a separate salt/brine tank, which is very easy to clean and with long connection hoses that are incredibly flexible to install.



The QUICKSOFT-M takes on the role as the so-called cabinet system. With same technology and identical data, but with compact measurements, it is a performance giant under compact systems.

Scope of delivery and technical data



JUDO QUICKSOFT-P/QUICKSOFT-P MEGA

Scope of delivery QUICKSOFT-P: Plant consisting of optical fibre-reinforced tanks (PN 10), filled with high-quality monospheric ion exchange resin in food grade quality for optimal water distribution and minimization of pressure loss and regeneration agent usage. Separate salt solution and supply tank with continuous brine supply and integrated level monitoring. Tried and tested, wear-free ceramic disc technology for lifelong programmed operational sequences. Forced regeneration after 96 hours and unit cleaning through integrated disinfection device with platinum plated titanium electrodes. Controller electronics with membrane keyboard and multi-cell LCD display for operation, regeneration, salt deficiency, colour status display as well as manual regeneration and potential-free fault signal. Including built-in rotary flange (QUICKSET-E) with patented bayonet connection, with screws and assembly cover. Including siphon for standard connection to the waste water system in accordance with EN 1717 and DIN 1988-100, including plug-in power supply.

Scope of delivery QUICKSOFT-MEGA: like QUICKSOFT-P, but consisting of 2 softener modules, in addition to parallel connection flange JQT 1¼".

Option to expand with accessories: JUDO Connectivity Module to connect QUICKSOFT-P via LAN connection to a home network and Internet, iOS/Android App available, for access from anywhere to comprehensive information, automated messages and functions as well as for triggering regeneration.

Type	QUICKSOFT-P	QUICKSOFT-P MEGA
Pipe connection	1"	1¼"
Nominal flow in accordance with EN 14743 and pressure loss 1 bar m³/h	1.8	3.6
Nominal flow with hardness reduction 20 °dH to 8 °dH m³/h	3.0	5.0
Salt use for each regeneration in kg	0.18	0.36
Salt supply tank content kg	50	100
Salt use for each m³ and softening from 20 °dH to 8 °dH in kg	0.4	0.4
Max. water temperature °C	30	30
Installation length, mm	195	230
Order number	8203514	8200367

Accessories	Order number
JUDO Connectivity Module	8235010
JUDO QUICKSET-X bypass valve (JQX) for installation between JUDO QUICKSET-E and JUDO QUICKSOFT-P.	8735210



Made in Germany



Stable plastic housing



Proven quality



Especially hygienic



Long-lasting ceramic disc technology



Short regeneration time



Resin in food grade quality



Cost-saving



Soft water around the clock



Separate brine tank



Very reliable



Horizontal and vertical installation



Signal display with traffic light function



Connectivity module (optional)



LAN connection (optional)



Product has potential-free contact



JUDO QUICKSOFT-M

Scope of delivery QUICKSOFT-M: like QUICKSOFT-P, however available as cabinet system with integrated salt solution and supply tank, suitable for block salt and regeneration salt in tablet form. Including Quickset-U connection set with bypass and connectors for connection to piping as well as for the softener, flexible DVGW approved tubing, including plug-in power supply.

Option to expand with accessories: JUDO Connectivity Module to connect QUICKSOFT-M via LAN connection to a home network and Internet, iOS/Android App available, for access from anywhere to comprehensive information, automated messages and functions as well as for triggering regeneration.

Type	QUICKSOFT-M
Connection	1"
Nominal flow in accordance with EN 14743 and pressure loss 1 bar m³/h	1.8
Nominal flow with hardness reduction 20 °dH to 8 °dH m³/h	3.0
Salt use for each regeneration in kg	0.18
Salt supply tank content kg	30
Salt use for each m³ and softening from 20 °dH to 8 °dH in kg	0.4
Max. water temperature °C	30
Installation length, mm	195
Order number	8203513

Accessories	Order number
JUDO Connectivity Module	8235010



Made in Germany



Stable plastic housing



Proven quality



Especially hygienic



Long-lasting ceramic disc technology



Short regeneration time



Resin in food grade quality



Cost-saving



Soft water around the clock



Very reliable



Horizontal and vertical installation



Signal display with traffic light function



Connectivity module (optional)



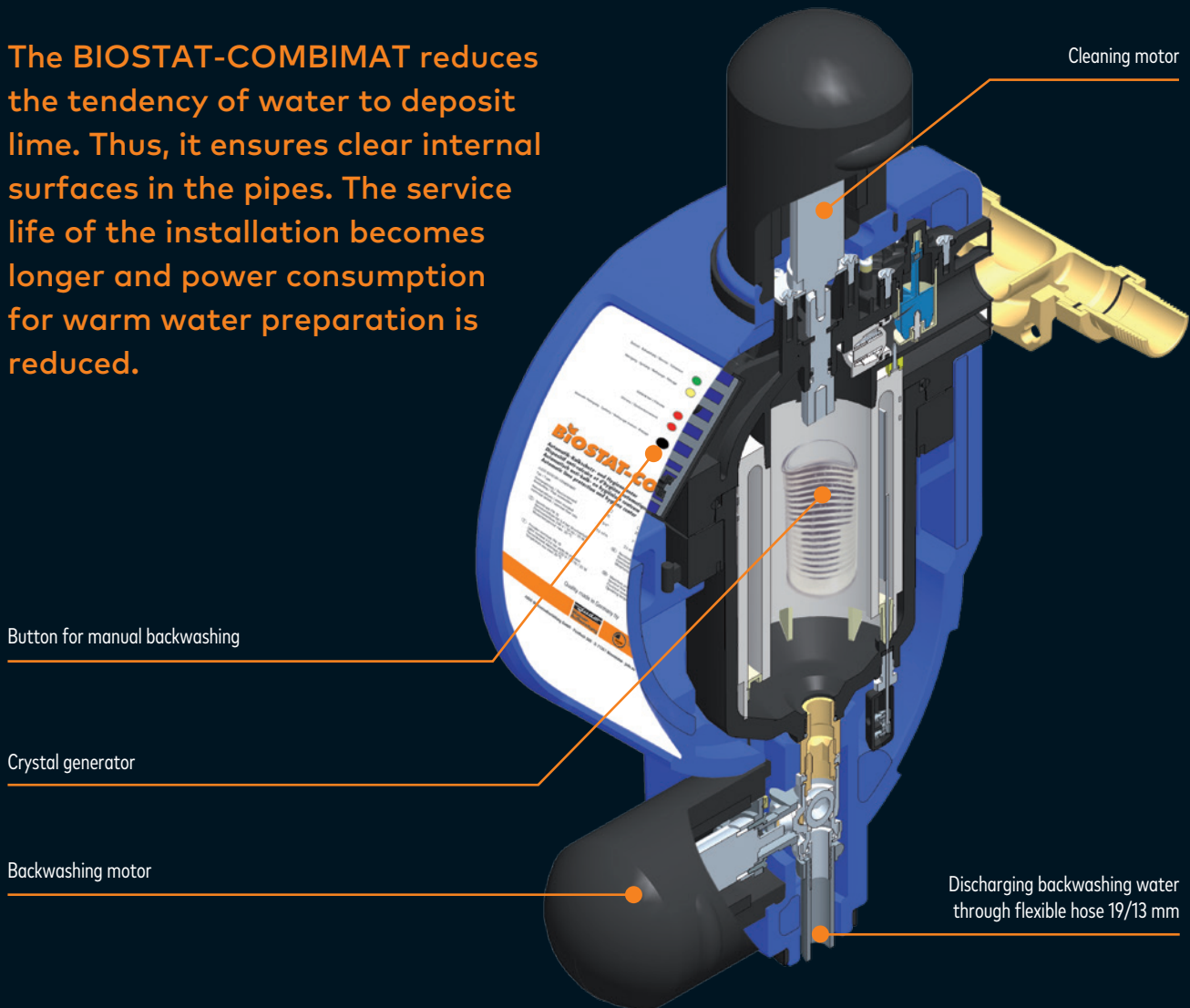
LAN connection (optional)



Product has potential-free contact

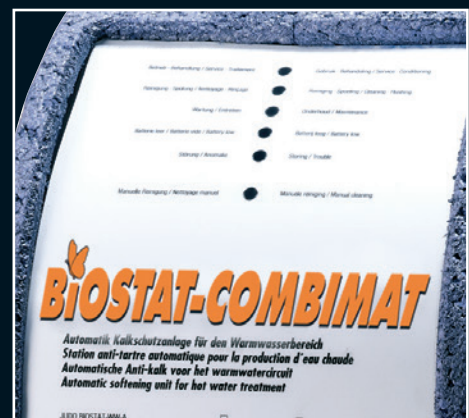
Powerful against lime.

The **BIOSTAT-COMBIMAT** reduces the tendency of water to deposit lime. Thus, it ensures clear internal surfaces in the pipes. The service life of the installation becomes longer and power consumption for warm water preparation is reduced.



Lime protection without additives

The BIOSTAT-COMBIMAT forms so-called seed crystals from water. These crystals remain in suspension and bind excess lime so that it does not deposit in the pipes. Water is not exposed to any materials. Additional plus points: Fully automatic operation, compact dimensions, low power consumption.



Scope of delivery and technical data



JUDO BIOSTAT-COMBIMAT

Scope of delivery: Beautiful, stable housing, PN 10: integrated water counter; electrolytically working patented seed crystal generator with microprocessor-controlled treatment flow. VDE-tested power supply, with two servomotors for automatic cathode cleaning and discharge of lime in waste water line, operational and function display through light diodes; including built-in rotary flange with patented bayonet connection, with screws and assembly cover, including plug-in power supply.

Type	BST-CA 15	BST-CA 25
Pipe connection	¾"	1"
Nominal flow rate, m³/hr	1.5	2.5
Max. number of residential units	1	2
Pressure loss at nominal flow rate bar	0.4	0.4
Max. operating pressure, bar	8	8
Max. water temperature °C	30	30
Installation length, mm	195	195
Order number	8210411	8210412



Made in
Germany



Proven
quality



Especially
hygienic



LED display



Cost-saving



Very
reliable

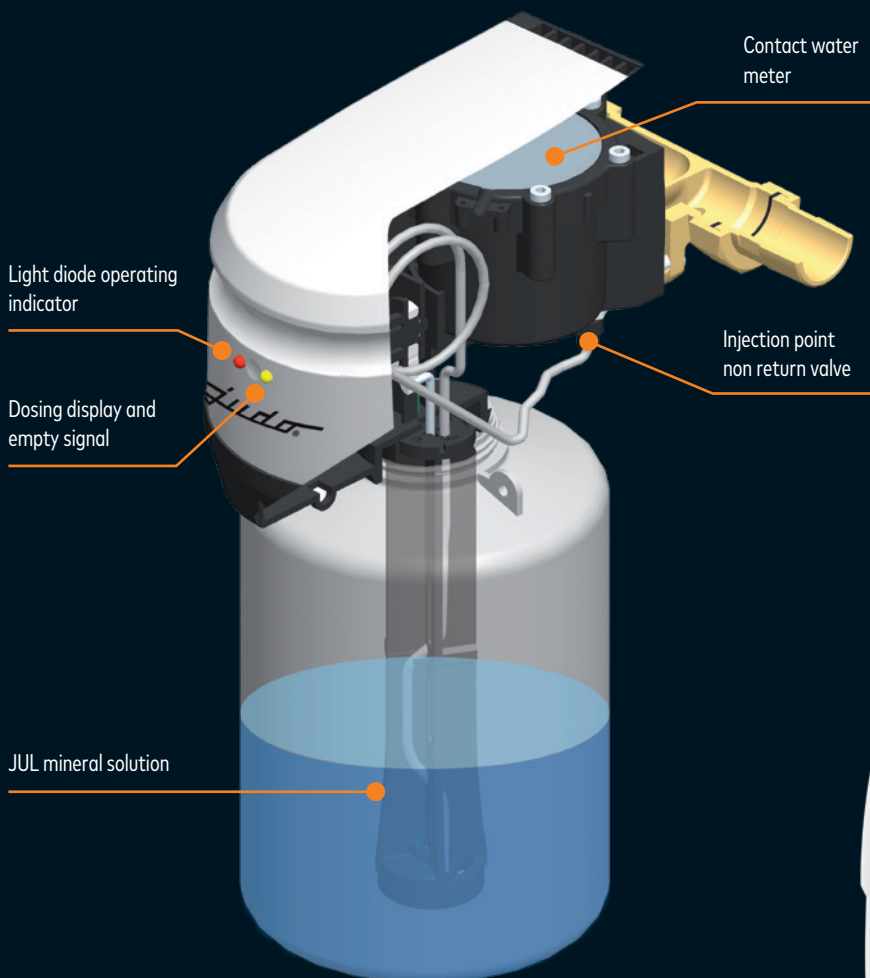


Horizontal
and vertical
installation

Trust the experience of billions of dosing pulses.

The JUDO JULIA dosing pump protects the installation and ensures best hygienic conditions. It doses a precisely calculated amount of mineral solution into drinking water - to protect against rust or for stabilizing lime scaling. When it comes to dosing, we know what we are talking about. In 1951 JUDO laid the foundation for the entire product family with the creation of the first fine dosing unit of the world.

JULIA



Safety on a larger scale: JUDO JULIA 60 for up to 100 residential units. Powerful and flexible: The dosing pump is set directly on the dosing tank; the separate water meter is simply mounted on the QUICKSET-E built-in rotary flange.



Scope of delivery and technical data

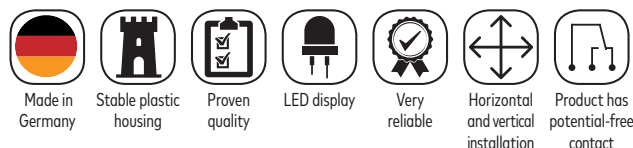


JUDO JULIA

Scope of delivery: Self-venting piston dosing pump (PN 10) with wear-free electrical synchronous motor drive, with electronic proportional control through water counter with Hall sensor, function and fault indicator, empty signal through light diode and buzzer, dry-run protection, integrated injection point and dosing hose. Built-in rotary flange with patented bayonet connection with screw and assembly cover, threaded connector in accordance with EN 10226-1. Output for potential-free empty signal (signal transfer cable required), including plug-in power supply.

Type	JJP 3 *	JJP 4 *	JJP 10	JJP 25	JJP 60
Working range in accordance with EN 14812 and DIN 19635-100 lower / upper working range m³/h	0.06 - 4	0.06 - 4	0.08 - 10.2	0.08 - 24	0.08 - 24
Suitable for a max. water consumption m³/month **	30	60	200	400	1.000
Recommended residential units	1 - 3	2 - 6	5 - 10	10 - 40	30 - 100
Pipe connection	1"	1"	1½"	1½"	2"
Max. operating pressure, bar	10	10	10	10	10
Pressure loss at upper working range bar	0.8	0.8	0.8	0.8	0.8
Contents of dosing tank litre	3	6	25	25	60
Treated water quantity per dosing tank m³ water	24 - 40	48 - 80	200 - 330	200 - 330	480 - 800
Max. water temperature °C	30	30	30	30	30
Installation length, mm	195	195	230	252	280
Order number	8309070	8309071	8309072	8309073	8309074

Accessories	Order number
JUDO JULIA signal transfer cable for potential-free fault and empty signal.	8340067



JUL-W-T

Area of application: Primarily as corrosion protection for galvanised pipes and copper pipes (professional advice required) in hardness range 1 + 2 as well as based on softener units.

Type	JUL-W-T	JUL-W-T	JUL-W-T
Cardboard tube for dosing agent litre	3	6	25
Order number	8600017	8600018	8600011



JUL-H-T

Area of application: Primarily as anti-scalant for all pipe materials in hardness range 2 + 3

Type	JUL-H-T	JUL-H-T	JUL-H-T
Cardboard tube for dosing agent litre	3	6	25
Order number	8600019	8600020	8600008

* Supplied with empty tank

** If there are no consumption data, water consumption of 10 m³ per month and per residential unit can be assumed. Water consumption of a person is at 3.5 - 7 m³ per month depending on the design of the house.

More quality of life with purified water.

JUDO PURE@TAP is not just a drinking water filter – it is also a two-level system which gives you optimal protection.

For water as you want it free from contamination, harmful materials and germs. However, minerals essential for health are retained in water in spite of highly intensive cleaning process.



JUDO PURE@TAP:

Two times more safe:
Filter + Filter

- ✓ Activated carbon filtration (Type AC)
- ✓ Microfiltration (Type MF)

The advantages:

- ✓ Keeps 99.99% of harmful substances, bacteria and germs away
- ✓ Easy installation
- ✓ Removes uncomfortable water taste and smell
- ✓ Long-lasting, stable housing

Scope of delivery and technical data



Accessory JUDO tap


JUDO PURE@TAP

Scope of delivery: Filter housing made of high-quality plastic, with filter housing made of brass, chromium plated, angle valve connection piece with shut-off valve 3/8", 8 mm hoses, activated carbon and microfilter cartridge, cover with month display for cartridge replacement, wall holder and backflow prevention.


Type	JUDO PURE@TAP
Pipe connection at entry	3/8" IG
Pipe connection at exit	3/8" AG
Nom. flow rate at 2 bar l/min.	2 *
Min./max. operational pressure bar	1/ 3.5
Total cartridge capacity ltrs.	2.000 *
Average cartridge exchange rate in months	4 - 6 *
Effective filtration rate µm	0.2
Water temperature range °C	5 - 30
Installation length, mm	240
Order number	8115029

Accessories	Order number
JUDO tap with connector set	8115028


Consumables	Order number
JUDO JFK-AKB 10-4 Activated carbon cartridge	8115016
JUDO JFK-MF 02-04 Micro-filter cartridge	8115017




Made in Germany




Stable plastic housing




Proven quality




Inspection glass




Especially hygienic



Replacement reminder



Very reliable



POU

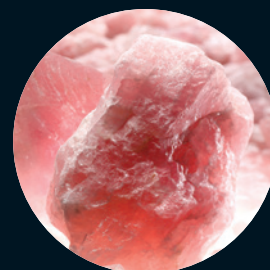
* Depending on incoming water quality

The source of new energy and vitality.

The power of precious stones in water: In the devices of JU-WEL product family, drinking water flows over selected, naturally energized precious stones. JU-WEL devices supply jewel energized water to all extraction points at home.

The advantages:

- ✓ Jewel energized water in whole house
- ✓ Well-being, vitality and improved room atmosphere
- ✓ Improvement of water structures, similar to spring water



JU-WEL

Scope of delivery: Beautiful housing made of high-quality plastic (PN 10) with inspection glass and light protection. Filling with energised amethyst, rose quartz and rock crystal precious stones for jewelled drinking water, integrated light charged for revitalising precious stones. Threaded connector in accordance with EN 10226-1, built-in rotary flange with patented bayonet connection made of brass with screws.

Type	JUW-T	JUW-T	JUW-T
Pipe connection	¾"	1"	1½"
Nominal flow rate, m³/hr	3.3	4.5	5.5
Pressure loss, bar	0.35	0.35	0.35
Max. water temperature °C	30	30	30
Installation length, mm	180	195	230
Order number	8270030	8270031	8270032



Made in Germany



Stable plastic housing



Proven quality



Inspection glass



Very reliable



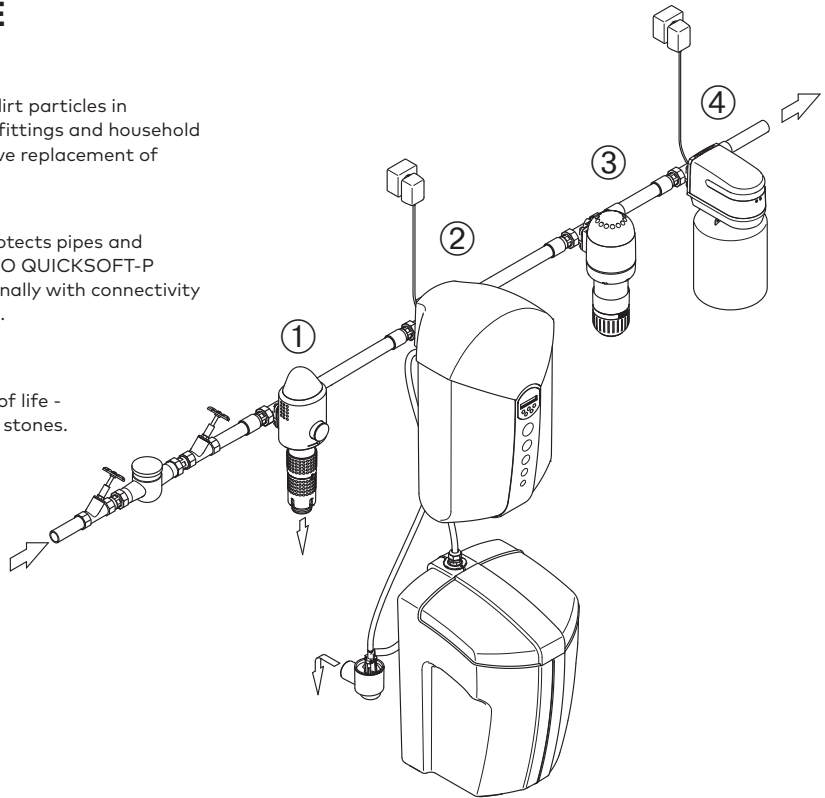
Horizontal and vertical installation



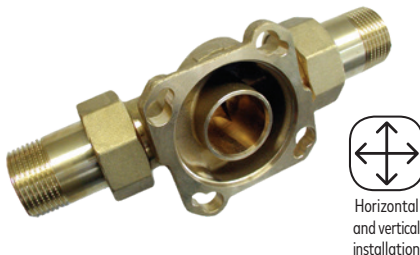
POE

Standard installation POE

- ① **JUDO JUKO-LF**
The backwashing protective filter against dirt particles in drinking water installation. Protects pipes, fittings and household devices against damages. Without expensive replacement of filter cartridges.
- ② **JUDO QUICKSOFT-P**
Perfectly soft water provides good living, protects pipes and devices against lime and saves energy. JUDO QUICKSOFT-P supplies soft water around the clock. Optionally with connectivity module for communication via smartphone.
- ③ **JUDO JU-WEL**
Positive influence on the body through selected precious stones. Water - our elixir of life - stores and transports the healing power of stones.
- ④ **JUDO JULIA dosing pump**
Reliable protection against corrosions and lime precipitation since many decades: Balanced minerals in conjunction with optimised operating conditions give protection against rust and lime - reliable. Suitable for all raw materials!



Water treatment with JUDO: Unique, high quality and innovative.



QUICKSET-E connection technology

Revolutionary - and already proven million times. The QUICKSET-E built-in rotary flange is the standard for installation of JUDO devices: It enables installation in horizontal as well as vertical pipes - simple and in no time.

Quality MADE IN GERMANY and approved internationally!



The last word in German approvals for the German Gas and Water industries, the DVGW has been setting and controlling the highest levels of product efficiency, health and safety standards enjoyed by the German market for over 150 years and is accepted world wide as one of the best standard levels.



The CE-sign demonstrates that the manufacturer confirms that his product conforms with the requirements as set out in directive 765/2008 of the harmonized regulations law within the community. CE was set up to ensure the end user access to safe products within the 30 signatory states within the common European economic area.



ACS stands for "attestation of sanitary conformity" and is the standard used by the French authorities for materials used in direct contact with drinking water. The ACS symbol is an assurance of the highest standards in performance conformity.



The WaterMark is the certificate of approval for products used with drinking water in Australia and New Zealand. It confirms that this product conforms with the requirements of the ABCB and is allowed for use accordingly. The Australian Building Codes Board (ABCB) is the norming institute responsible for the development and care of regulations for building and sanitary installation.



The CSA, Canadian Standards Association, is an independent NPO with offices in 14 countries developing and controlling over 3000 norms governing safety, design and performance in the water industry. CSA is recognised as an equivalent standard by such renowned organisations as UL in the USA.



The BELGAQUA certificate from the Belgian Association of the water industry is awarded to products and materials conform to the requirements for contact with drinking water.



PZH is an institute certifying that products pose no danger to health or the environment when used in accordance with manufacturer's instructions. The PZH hygiene certificate is very important in the water treatment industry.



The GOST certificate is the official confirmation that these products comply with the national requirements for quality and safety in the Russian Federation.



The swiss water and gas association tests and certifies products ensuring these are in line with the highest current levels of quality, safety and technical suitability for use in gas and water installations.



The Craftsman's seal is a guarantee for the highest standards of product quality issued by the German Craftsman's industry in association with the manufacturer's Assoc. and over 5000 regional distribution partners in the heating and sanitation industry in Germany.



The Plus X award is the world's largest award for innovation in technology, sports and lifestyle chosen by a jury consisting of 25 branches of the economy, with 23 competent partners and a total marketing investment volume of over 25 million Euros.



The IF design awards are counted amongst the most important in the world of international design. The IF logo awarded to the contest winner is accepted world wide as an indicator for excellence in design and is highly regarded by designers everywhere.



Quality management standard ISO 9001 is one of the most widely accepted quality management approvals both on a national and international level. Our ISO 9001 certification goes to prove how seriously we take our high levels of quality management, and keep developing them further.



JUDO Wasseraufbereitung GmbH
Hohreuschstraße 39-41
71364 Winnenden, Germany
phone +49 (0)7195 692 - 0
fax +49 (0)7195 692 - 110
e-mail: info@judo.eu · judo.eu

